



AMTA

Australian Mobile
Telecommunications
Association

Information for Developers

Inclusion of the consideration
of mobile infrastructure in the
Telecommunications in New
Developments Policy (TIND)

amta.org.au



People moving into new properties expect ready access to modern telecommunications. The Federal Government’s TIND policy is designed to make this happen.

In Australia, the provision of telecommunications networks and services is generally split to promote competition and consumer choice. Telecommunications Carriers generally provide networks, and retail service providers (RSPs) supply services. Both are involved in delivering services to new developments and premises.

Developers are responsible for organising and meeting the cost of fixed line telecommunications in their developments. Developers must arrange for a carrier to install network infrastructure in their developments and follow the provisions of the TIND. More information about these requirements in the TIND, please visit <https://www.infrastructure.gov.au/departments/media/publications/telecommunications-new-developments>

Changes in the TIND to include provision of mobile telecommunications

In February 2024, new provisions in the TIND were developed by the Federal Government to ensure that the planning process for all new housing developments of 50 dwellings or more include consideration of mobile telecommunications infrastructure and mobile coverage.

This guidance covering the new provisions in the TIND has been prepared by the Australian Mobile Telecommunications Association (AMTA), the peak industry body representing Australia’s mobile telecommunications industry. It has been prepared with the purpose of informing developers of the new requirements and how they may work constructively with AMTA members including mobile telecommunications network operators (such as Telstra, Optus and TPG Telecom), and mobile network infrastructure providers (such as Amplitel and Indara).

How to find out about existing mobile service in an area where a new housing development is being planned for?

Before engaging with mobile network operators and infrastructure providers, AMTA recommends that developers seek to understand what infrastructure and level of mobile service is currently available from existing mobile network telecommunications facilities in the area.

There is likely to be existing service from the infrastructure of one or more mobile network operators, however as an area develops and more houses are built, additional supplementary ‘depth of coverage’ may be required from additional mobile telecommunications facilities that are located closer together.

Also, there may be opportunities for more than one mobile network operator to ‘co-locate’ on an existing or proposed tower, pole or other elevated structure in an area. However, it is important to note that mobile network facilities increasingly need to be located close to where people live, work, shop and socialise. So, setting aside appropriate sites within communities at an early stage – even at structure plan stage, can have long term benefits.

The inclusion of mobile network infrastructure in the TIND reflects existing expectations about access to other essential utilities in new housing developments such as water, electricity and fixed line telecommunications services, highlighting the critical importance of mobile connectivity in modern life.

The policy means that developers, mobile network operators and infrastructure providers need to engage as early as possible on mobile connectivity and coverage solutions for housing developments.

To find out more about the inclusion of mobile telecommunications infrastructure in the TIND, please visit www.infrastructure.gov.au/tind

Mobile network operators publish maps that show the predictive mobile coverage across Australia. By entering your address, you will be able to see whether 4G and/or 5G mobile coverage is available in the location where a housing development is proposed. In relation to service, you can access the predictive coverage maps at the links below.

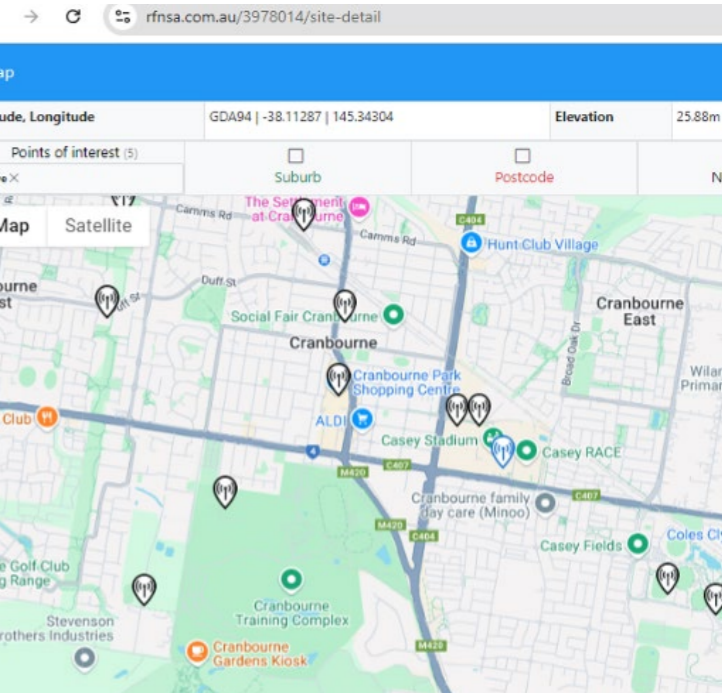
- [Telstra Predictive Coverage Map](#)
- [Optus Predictive Coverage Map](#)
- [Vodafone Predictive Coverage Map \(TPG\)](#)

Whilst coverage maps showing existing mobile service can be found on the above websites, information is also increasingly available on the Federal Government’s National Audit of Mobile Coverage website at: [infrastructure.gov.au/media-communications-arts/better-connectivity-plan-regional-and-rural-australia/national-audit-mobile-coverage](https://www.infrastructure.gov.au/media-communications-arts/better-connectivity-plan-regional-and-rural-australia/national-audit-mobile-coverage)

How to find out about proposed mobile network infrastructure

Information about proposed and current mobile telecommunications facilities is also available on the [Radio Frequency National Site Archive \(RFNSA\) website](#). The RFNSA is managed by AMTA, and in addition to undertaking searches of an area, you can also subscribe on the RFNSA to receive information about future installations of telecommunications equipment at a particular site or postcode.

An extract of the RFNSA is to the right. The maps in the RFNSA show existing mobile telecommunications sites across Australia, and these tend to include towers, pole and rooftop sites. At each site, the RFNSA will show which mobile network operators are utilising the structure (so which operators have active antennas), and this also includes information about compliance with a range of requirements including those relating to Radio-frequency Electromagnetic Energy.



Steps to comply with the TIND as it relates to planning for mobile network infrastructure

Once a developer of a proposed new housing developments of 50 dwellings or more has reviewed existing coverage and has an understanding of what service is available, the TIND encourages the developer to engage with both:

1. mobile network infrastructure providers (such as AMTA members Amplitel and Indara);and,
2. mobile telecommunications network operators (such as AMTA members Telstra, Optus and TPG Telecom).

This engagement should include an exchange of information over an extended period of time from the commencement of rezoning of land, through to development of a precinct structure plan and then progressively as dwellings are approved and building commences.

It is also desirable for the developer to engage with State and Territory governments (including agencies that manage the strategic planning on behalf of the State or Territory), crown land agencies and councils where applicable. Where no coverage exists developers should consider the reservation of suitable locations upon which infrastructure could be located. This could be in areas earmarked for other utility infrastructure, commercial precincts, ovals and community hubs.

The objective of this engagement is the early identification of sites for mobile network infrastructure that can be incorporated into approved structure or growth area plans, so that there is an increased awareness and planning for the provision of this infrastructure. When it comes time for the mobile network operator and mobile network infrastructure provider to establish a mobile telecommunications facility, there will therefore be a presumption that approval for mobile infrastructure deployment should proceed in accordance with the plan and within set guidelines.

By following these steps, compliance with the TIND by developers will elevate the importance of mobile connectivity in new developments to improve connectivity and community safety across all urban locations, noting that new greenfield developments can sometimes be in proximity to existing disaster-prone areas.

AMTA would be pleased to further discuss this guidance and how the development industry can work with the mobile telecommunications industry to implement the TIND policy. We can be contacted on contact@amta.org.au

The AMTA logo consists of a white stylized wave shape above the letters "AMTA" in a bold, white, sans-serif font. Below the letters is a thick white horizontal bar.

AMTA

Australian Mobile
Telecommunications
Association



Contacts for AMTA members that are MNOs and MNIPs with a national presence

Mobile Telecommunications Network Operators

Telstra: Basestation.Enquiries@team.telstra.com

Optus: communityrelations@optus.com.au

Vodafone (TPG Telecom): communityrelations@tpgtelecom.com.au

Mobile Network Infrastructure Providers

Amplitel: enquiries@amplitel.com

Indara: community@indara.com